

Tingewick Village Hall applied for, and was successful in obtaining a grant of almost £15,000 to re-clad the wooden exterior of the Hall and to introduce insulation into the “wall cavity”.

Over a period of just over 2 weeks the Village Hall was completely transformed.



**Eastside cladding removed exterior exposed**



**Eastside – new insulation installed**



**Eastside – cladded to windows**



**Rear – rubber membrane over insulation**



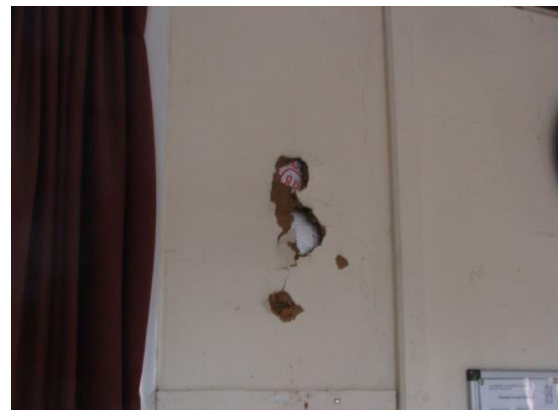
**Rear – cladded to top of window**



**Westside – rubber membrane over insulation**



**Westside – cladding around window**



**Interior – tissue paper/plaster plug pushed out by exterior insulation.**